



by  stalcast

ECO line furniture

Made of stainless steel



FUNCTIONAL



ECONOMICAL



EASY TO INSTALL

AISI 201

stainless steel



furniture



Polish production
European quality



>7500 products
in stock



20 000
pallet spaces



More than 600
employees



98% product
availability

Since over **30 years** we do all the best to support our client's in their business

We are practitioners who know power of gastronomy. Your challenges are our challenges, too, so we offer solutions to help you achieve your goal - with us, you'll get the satisfaction and take pride in your work.

Together with restaurant owners, distributors and our partners, we are changing the catering market. In times of uncertainty, we believe that this is a job for **strong, dynamic and proven players**.

We are a family business. We have been sharing our knowledge and experience for **two generations**. This is also how we approach business - as partners, based on mutual **trust and support**. Working with us, you can count on facing together: the daily and long-term challenges of the catering business: through kitchen equipment, selection of furniture or accessories, to professional service at every stage of the purchase.

Satisfaction with well-prepared dishes and, as a result, the **satisfaction of our clients** is our greatest motivation. After all, as a leader, we feel responsible not only for our customers, but also for the entire catering industry, setting trends and new directions of development.

We are the Central European market leader and the largest HoReCa company in the local market. You can count on us.

In 2008, we launched a factory of catering equipment and accessories in Radom, and we are successively developing our offer. Production is carried out in a modern machinery park, which gives us great opportunities for rapid implementation and precise individualization of orders.

We manufacture stainless steel furniture, dishwashers, heating lines, serving lines and small setting equipment. We also manufacture plastic accessories (such as dishwasher baskets and catering boards).

Polish manufacturing



Modern Factory of Catering in Radom

In 2018, we launched the industry's most modern Logistics Center, where distribution to domestic and foreign customers is organized using the latest processes and technologies.

- Capacity of almost 20 000 pallets
- Same-day handling time
- More than 7500 products in stock
- 10 ramps

By fulfilling your order, we **care** about you and the environment. We have almost completely **reduced the use of plastics** in packaging, introduced **environmentally friendly solutions** in the production of stainless steel furniture, and are gradually extending this process to other manufactured equipment.

We support our clients at every stage of the investment

Design studio



Service



Expert advice



Showrooms partner



We operate in Poland through
more than **500 distributors**
- our Business Partners

Globally, we work with
220 partners in more than
40 countries.



stalgastr.eu



export@stalgastr.com



GREDIL

ECO line furniture

A professional kitchen means professional equipment, including stainless steel furniture. In addition to the safety aspects, ease of use in daily work or corrosion resistance are extremely important. The GREDIL ECO product line meets all these expectations.

**AISI
201**

Ease of use and assembly made of AISI 201 stainless steel



Corrosion resistance suitable for use in the catering industry



Eco friendly, no plastics in packaging

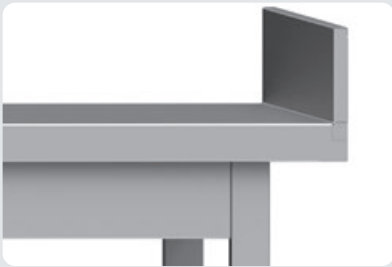


Food safety certificate to work safety

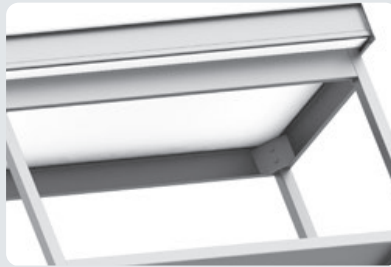


Production in Europe guarantees fast and flexible delivery

box edge



working table top is reinforced with a laminated board



solid connection of the top with the legs



lower reinforcement leg connection system



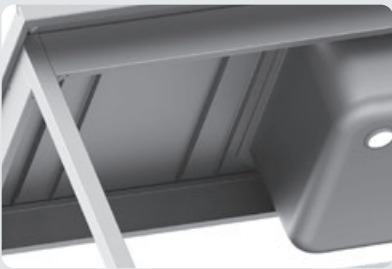
easy to assemble shelf



Technical durability, versatility in use and ease of maintenance are reliable features of all stainless-steel furniture. Explore the additional features of the GREDIL ECO line

- The gap between the floor and the bottom edge of the profile, shelf or the bottom of the furniture is 150 mm
- The bodies of tables, cabinets and lockers are equipped with adjustable shelves
- The furniture is equipped with a protective equipotential pin
- Assembly tools included
- Assembly tools included
- The furniture is delivered in compact cardboard packaging
- The basins are equipped with a front cover
- The Back box edge has the dimensions of 100x15mm
- The table tops overhang the table base: 30 mm at the front, 15 mm at the sides and 80 mm at the back

table top with a chamber reinforced with a metal profile



triple connection system of the chamber of the basin with the leg



shelves and the bottom plate of the cabinet are reinforced with the beams



easy mounting of the console to the shelf top



shelf mounting system in the shelves





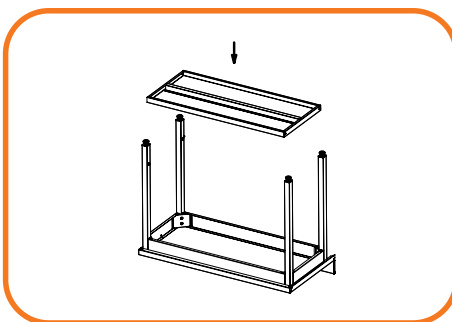
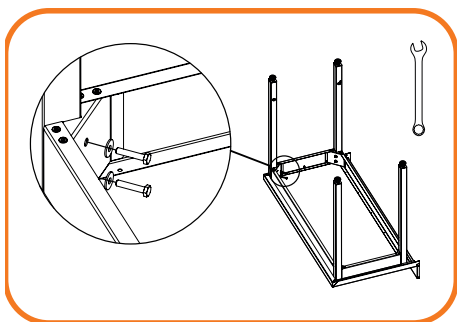
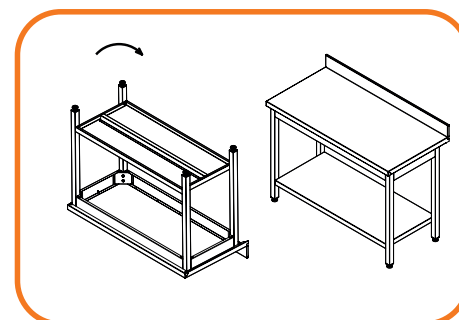
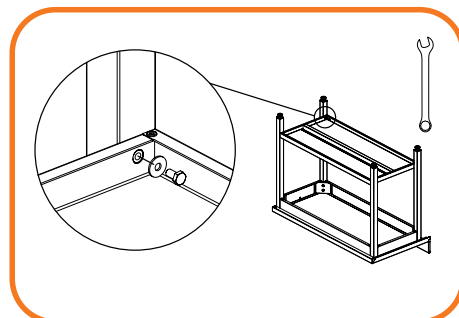
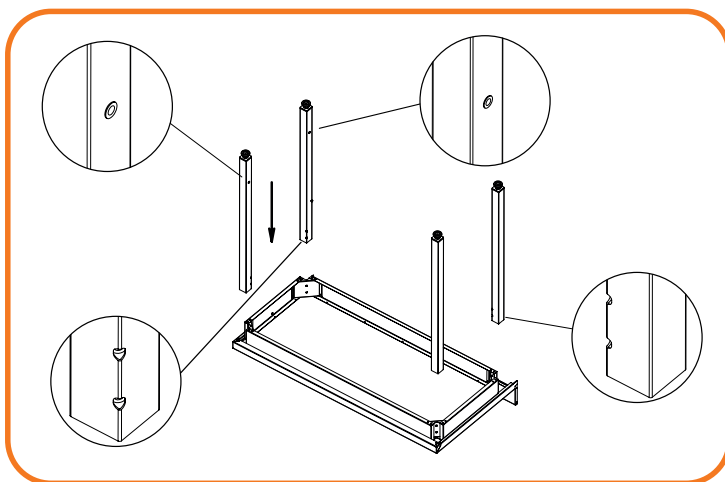
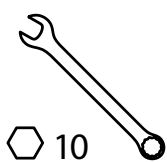
GREDIL

ECO line furniture

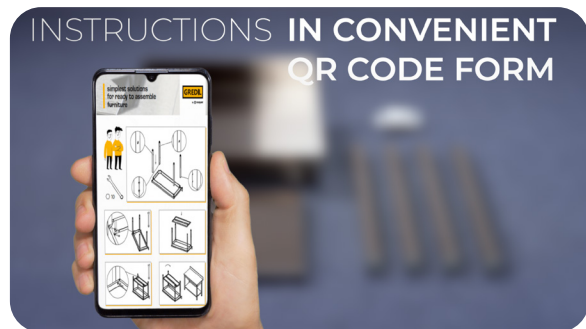
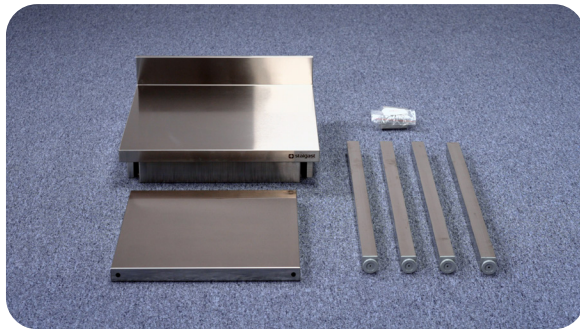
There are two types of stainless steel furniture on the catering market because of the way it is manufactured: welded furniture and bolted furniture for self-assembly.

See how easy it is to assemble GREDIL ECO line furniture!

- Assembly tools included
- The furniture is delivered in compact cardboard packaging
- The bodies of tables, cabinets and lockers are equipped with adjustable shelves
- The furniture is equipped with a protective equipotential pin



**Watch the video and see how quick and easy it is to assemble
GREDIL ECO line furniture**



SCAN ME

**Scan QR code
and watch full video**





002

WALL TABLE WITHOUT SHELF

H = 850MM

Cat. No.	W (mm)	D (mm)	Cat. No.	W (mm)	D (mm)
950026060	600	600	950027060	600	700
950026080	800		950027080	800	
950026100	1000		950027100	1000	
950026120	1200		950027120	1200	
950026140	1400		950027140	1400	
950026150	1500		950027150	1500	
950026160	1600		950027160	1600	
950026180	1800		950027180	1800	
950026200	2000		950027200	2000	



004

WALL TABLE WITH SHELF

H = 850MM

Cat. No.	W (mm)	D (mm)	Cat. No.	W (mm)	D (mm)
950046060	600	600	950047060	600	700
950046080	800		950047080	800	
950046100	1000		950047100	1000	
950046120	1200		950047120	1200	
950046140	1400		950047140	1400	
950046150	1500		950047150	1500	
950046160	1600		950047160	1600	
950046180	1800		950047180	1800	
950046200	2000		950047200	2000	



006

WALL TABLE WITH 2 SHELFs

H = 850MM

Cat. No.	W (mm)	D (mm)	Cat. No.	W (mm)	D (mm)
950066060	600	600	950067060	600	700
950066080	800		950067080	800	
950066100	1000		950067100	1000	
950066120	1200		950067120	1200	
950066140	1400		950067140	1400	
950066150	1500		950067160	1600	
950066160	1600		950067180	1800	
950066180	1800				



008

CENTRAL TABLE WITHOUT SHELF
H = 850MM

Cat. No.	W (mm)	D (mm)	Cat. No.	W (mm)	D (mm)
950086060	600	600	950087060	600	700
950086080	800		950087080	800	
950086100	1000		950087100	1000	
950086120	1200		950087120	1200	
950086140	1400		950087140	1400	
950086150	1500	600	950087150	1500	700
950086160	1600		950087160	1600	
950086180	1800		950087180	1800	
950086200	2000		950087200	2000	



010

CENTRAL TABLE WITH SHELF
H = 850MM

Cat. No.	W (mm)	D (mm)	Cat. No.	W (mm)	D (mm)
950106060	600	600	950107060	600	700
950106080	800		950107080	800	
950106100	1000		950107100	1000	
950106120	1200		950107120	1200	
950106140	1400		950107140	1400	
950106150	1500	600	950107150	1500	700
950106160	1600		950107160	1600	
950106180	1800		950107180	1800	
950106200	2000		950107200	2000	



425

LOW CENTRAL TABLE WITH SHELF
H = 600MM

Cat. No.	W (mm)	D (mm)
954257100	1000	700
954257150	1500	
954257200	2000	





014

WALL TABLE WITH SWING DOORS H = 850MM

Cat. No.	W (mm)	D (mm)	Cat. No.	W (mm)	D (mm)
950146040	400	600	950147040	400	700
950146060	600	600	950147060	600	700



015

WALL TABLE WITH SWING DOORS H = 850MM

Cat. No.	W (mm)	D (mm)	Cat. No.	W (mm)	D (mm)
950156080	800	600	950157080	800	700
950156100	1000	600	950157100	1000	700
950156120	1200	600	950157120	1200	700

- movable shelf



018

WALL TABLE WITH SLIDING DOORS H = 850MM

Cat. No.	W (mm)	D (mm)	Cat. No.	W (mm)	D (mm)
950186100	800	600	950187100	800	700
950186120	1000	600	950187120	1000	700
950186140	1200	600	950187140	1200	700

- movable shelf



445

TABLE WITH A SINGLE-CHAMBER SINK WITH A SHELF
H = 850MM

Cat. No.	W (mm)	D (mm)	Sink dimensions (mm)
954456060	600	600	400x340x250

Cat. No.	W (mm)	D (mm)	Sink dimensions (mm)
954457060	600	700	400x400x250



446

TABLE WITH A SINGLE-CHAMBER SINK WITH A SHELF
H = 850MM

Cat. No.	W (mm)	D (mm)	Sink dimensions (mm)
954466100	1000		400x400x250
954466120	1200	600	400x400x250
954466140	1400		400x400x250

Cat. No.	W (mm)	D (mm)	Sink dimensions (mm)
954467100	1000		500x500x250
954467120	1200	700	500x500x250
954467140	1400		500x500x250

- 954467100 without drainer



447

TABLE WITH A SINGLE-CHAMBER SINK WITH A SHELF
H = 850MM

Cat. No.	W (mm)	D (mm)	Sink dimensions (mm)
954476100	1000		400x400x250
954476120	1200	600	400x400x250
954476140	1400		400x400x250

Cat. No.	W (mm)	D (mm)	Sink dimensions (mm)
954477100	1000		500x500x250
954477120	1200	700	500x500x250
954477140	1400		500x500x250

- 954477100 without drainer





GREDIL

ECO line furniture

Adjustment of individual
assembly elements

458

TABLE WITH A DOUBLE CHAMBER SINK WITH A SHELF H = 850MM

Cat. No.	W (mm)	D (mm)	Sink dimensions (mm)
954586100	1000		400x400x250
954586120	1200	600	400x400x250

Cat. No.	W (mm)	D (mm)	Sink dimensions (mm)
954587100	1000		400x400x250
954587120	1200	700	500x500x250



459

TABLE WITH A DOUBLE CHAMBER SINK WITH A SHELF H = 850MM

Cat. No.	W (mm)	D (mm)	Sink dimensions (mm)
954596140	1400		400x400x250
954596160	1600	600	400x400x250

Cat. No.	W (mm)	D (mm)	Sink dimensions (mm)
954597140	1400		500x500x250
954597160	1600	700	500x500x250



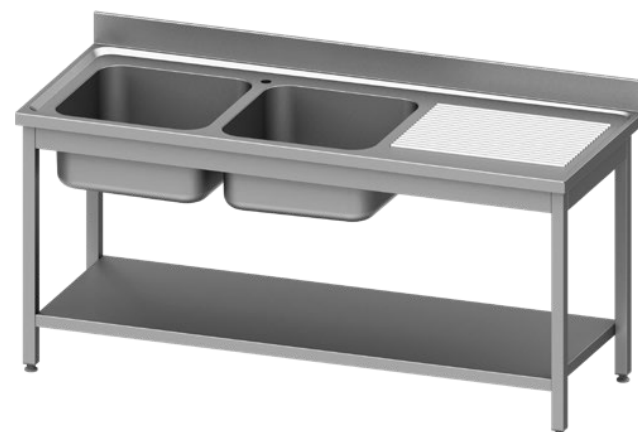
- 954597140 without drainer

460

TABLE WITH A DOUBLE CHAMBER SINK WITH A SHELF H = 850MM

Cat. No.	W (mm)	D (mm)	Sink dimensions (mm)
954606140	1400		400x400x250
954606160	1600	600	400x400x250

Cat. No.	W (mm)	D (mm)	Sink dimensions (mm)
954607140	1400		500x500x250
954607160	1600	700	500x500x250



- 954607140 without drainer

477

LOADING TABLE FOR STALGAST HOOD DISHWASHER
H = 870MM

Cat. No.	W (mm)	D (mm)	Sink dimensions (mm)
954777080	800		400x400x250
954777100	1000	670	400x400x250



479

LOADING TABLE FOR STALGAST HOOD DISHWASHER
H = 870MM

Cat. No.	W (mm)	D (mm)	Sink dimensions (mm)
954797080	800		400x400x250
954797100	1000	670	400x400x250



478

UNLOADING TABLE FOR STALGAST HOOD DISHWASHER
H = 870MM

Cat. No.	W (mm)	D (mm)
954787080	800	
954787100	1000	670



480

UNLOADING TABLE FOR STALGAST HOOD DISHWASHER
H = 870MM

Cat. No.	W (mm)	D (mm)
954807080	800	
954807100	1000	670





489

TABLE WITH SINGLE-COMPARTMENT SINK AND ROOM
FOR FRIDGE OR DISHWASHER

H = 900MM

Cat. No.	W (mm)	D (mm)	Sink dimensions (mm)
954897120	1200		400x400x250
954897140	1400	700	500x500x250



490

TABLE WITH SINGLE-COMPARTMENT SINK AND ROOM
FOR FRIDGE OR DISHWASHER

H = 900MM

Cat. No.	W (mm)	D (mm)	Sink dimensions (mm)
954907120	1200		400x400x250
954907140	1400	700	500x500x250

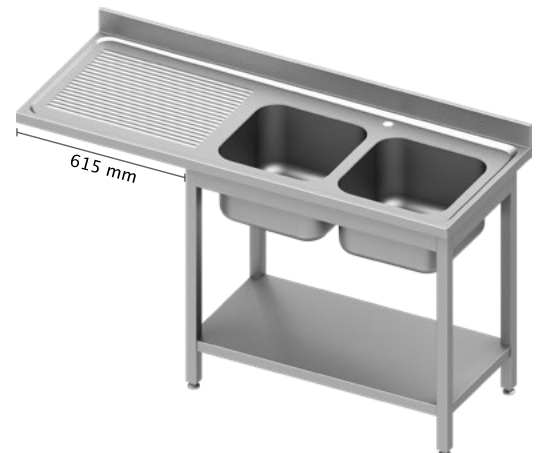


491

TABLE WITH 2-COMPARTMENT SINK AND ROOM
FOR FRIDGE OR DISHWASHER

H = 900MM

Cat. No.	W (mm)	D (mm)	Sink dimensions (mm)
954917160	1600		400x400x250
954917180	1800	700	500x500x250



492

TABLE WITH 2-COMPARTMENT SINK AND ROOM
FOR FRIDGE OR DISHWASHER

H = 900MM

Cat. No.	W (mm)	D (mm)	Sink dimensions (mm)
954927160	1600		400x400x250
954927180	1800	700	500x500x250



133

TABLE WITH A SINGLE-CHAMBER BASIN
H = 850MM

Cat. No.	W (mm)	D (mm)	Cat. No.	W (mm)	D (mm)
951336080	800		951337080	800	
951336100	1000	600	951337100	1000	700
951336120	1200		951337120	1200	

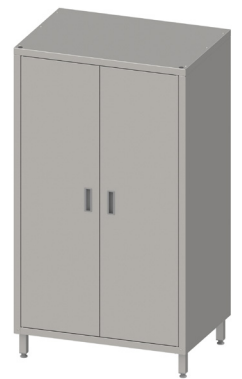
- chamber height h = 300 mm



152

STORAGE CABINET, SWINGING DOOR
H = 1800MM

Cat. No.	W (mm)	D (mm)	Cat. No.	W (mm)	D (mm)
951526080	800		951527080	800	
951526100	1000	600	951527100	1000	700



160

STORAGE CABINET, SLIDING DOOR
H = 1800MM

Cat. No.	W (mm)	D (mm)	Cat. No.	W (mm)	D (mm)
951606100	1000		951607100	1000	
951606120	1200	600	951607120	1200	700

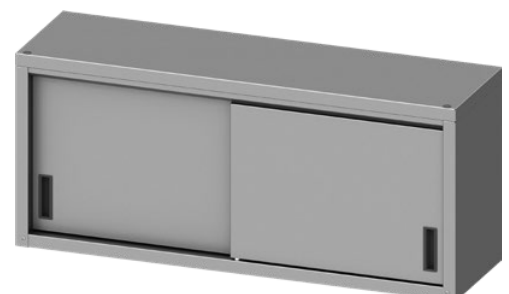


172

HANGING CABINET SLIDING DOOR
H = 600MM

Cat. No.	W (mm)	D (mm)	Cat. No.	W (mm)	D (mm)
951723080	800		951724080	800	
951723100	1000		951724100	1000	
951723120	1200	300	951724120	1200	400
951723140	1400		951724140	1400	
			951724160	1600	

- movable shelf





173

CONSOLE HANGING SHELF
H = 170MM

Cat. No. W (mm) D (mm)

951733060	600	
951733080	800	
951733100	1000	300
951733120	1200	



188

STORAGE RACK SOLID SHELVES
H = 1800MM

Cat. No. W (mm) D (mm)

951884080	800	
951884100	1000	
951884120	1200	400
951884140	1400	

Cat. No. W (mm) D (mm)

951885080	800	
951885100	1000	
951885120	1200	500
951885140	1400	

Cat. No. W (mm) D (mm)

951886080	800	
951886100	1000	
951886120	1200	600
951886140	1400	



175

SINGLE ADJUSTABLE HANGING SHELF
H = 400MM

Cat. No. W (mm) D (mm)

951753080	800	
951753120	1200	300



176

SINGLE ADJUSTABLE HANGING SHELF
H = 400MM

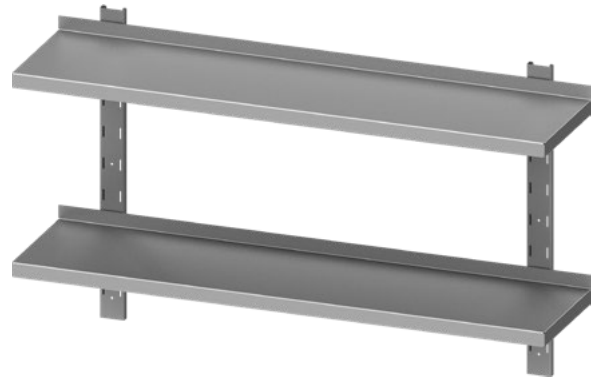
Cat. No.	W (mm)	D (mm)
951763160	1600	300



177

DOUBLE ADJUSTABLE HANGING SHELF
H = 660MM

Cat. No.	W (mm)	D (mm)
951773100	1000	
951773120	1200	300



232

BLOCK OF TWO OR THREE DRAWERS
H = 540MM

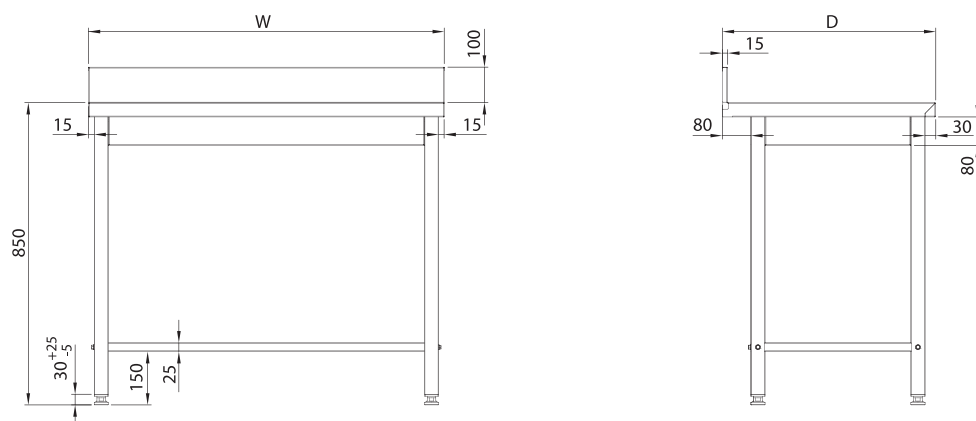
Cat. No.	W (mm)	Drawers No
952324042	490	2
952325042	590	

Cat. No.	W (mm)	Drawers No
952324043	490	3
952325043	590	

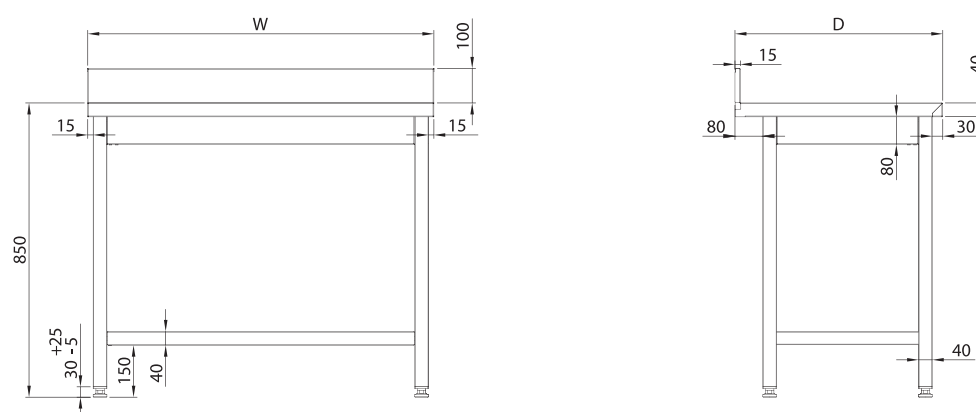




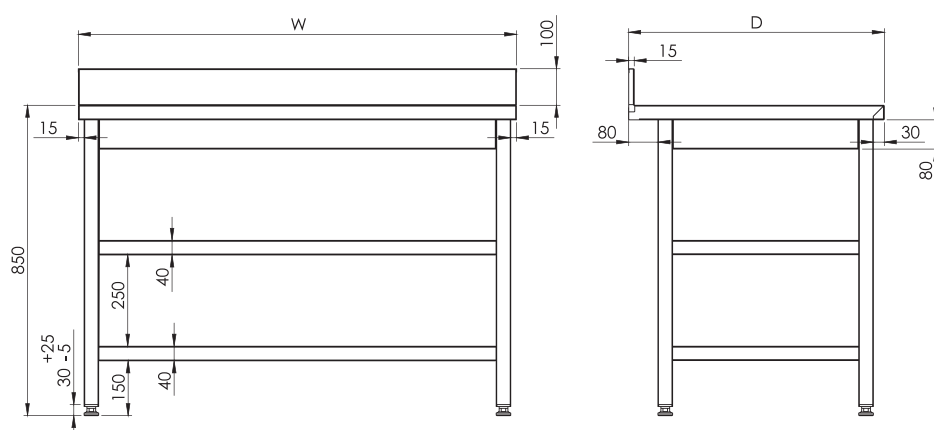
002 WALL TABLE WITHOUT SHELF



004 WALL TABLE WITH SHELF

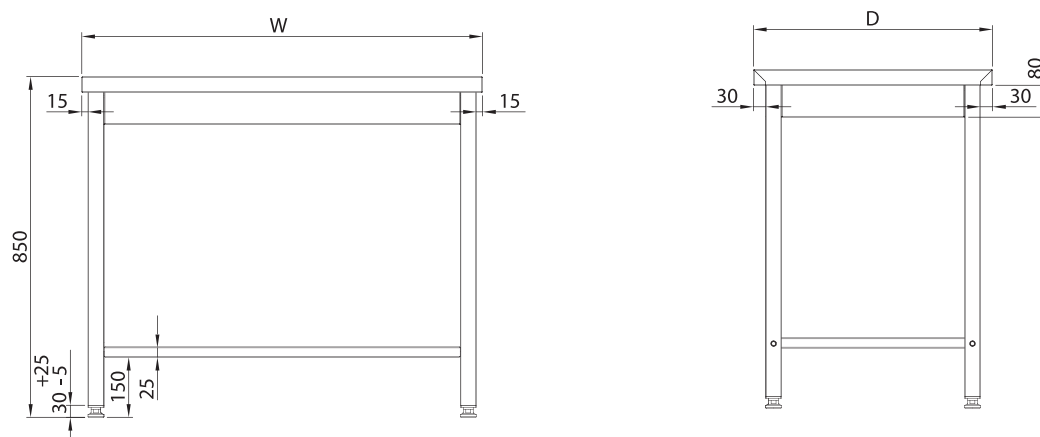


006 WALL TABLE WITH 2 SHELFS



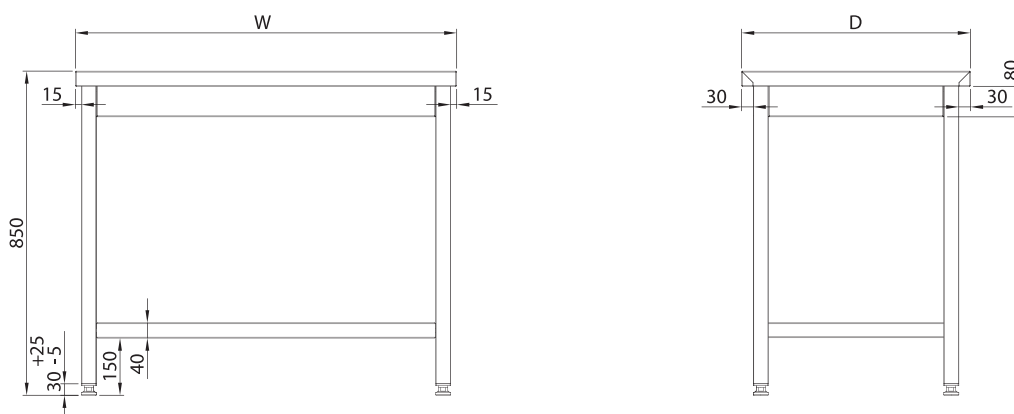
008

CENTRAL TABLE WITHOUT SHELF



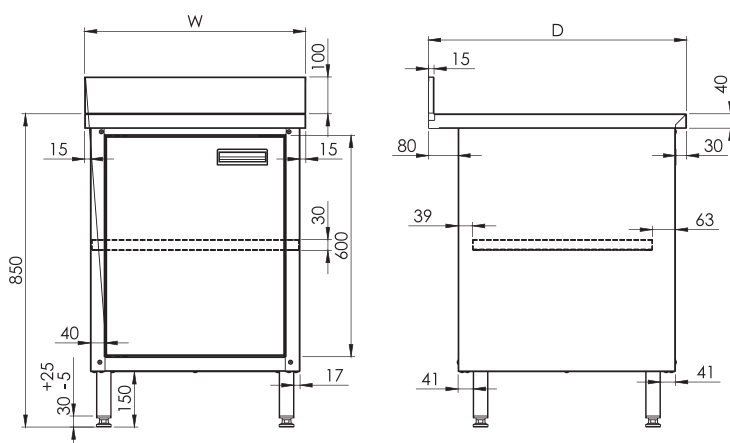
010

CENTRAL TABLE WITH SHELF



014

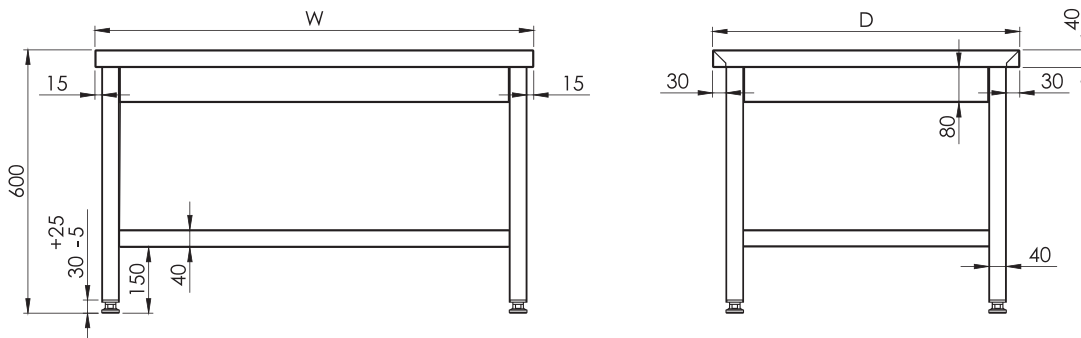
WALL TABLE WITH SWING DOORS





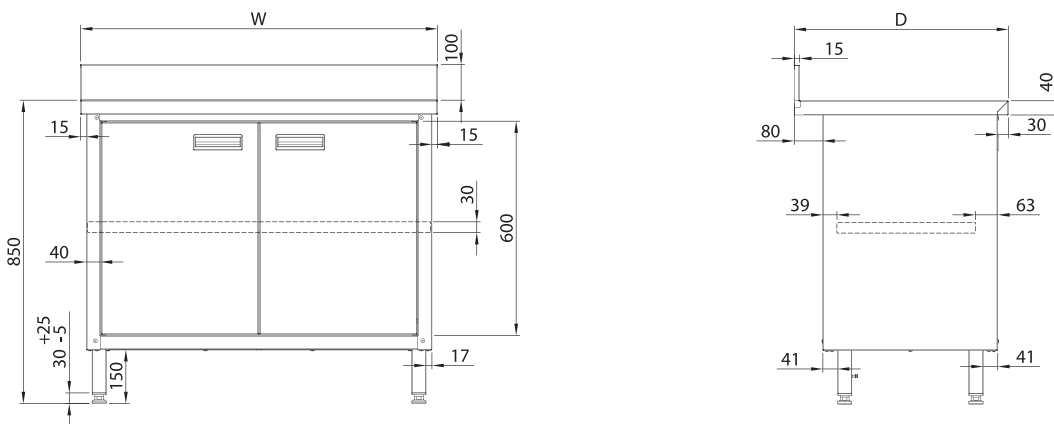
425

WALL TABLE WITH SWING DOORS



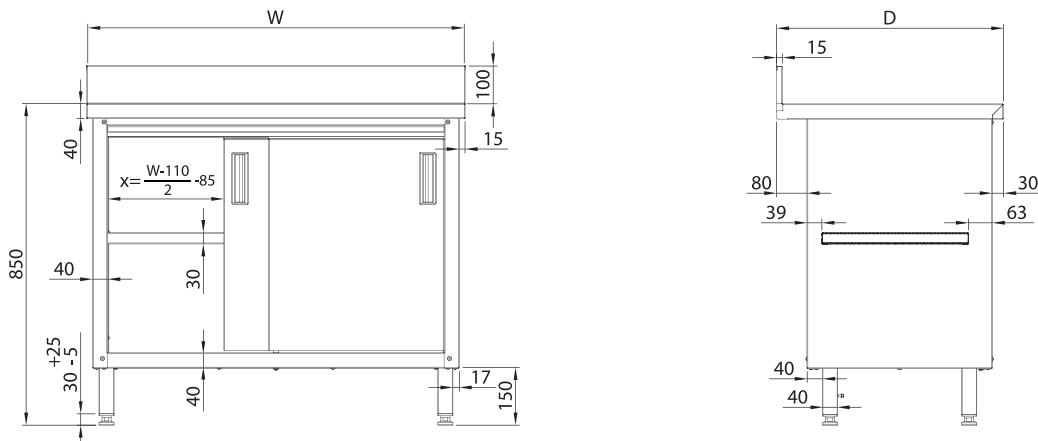
015

WALL TABLE WITH SWING DOORS



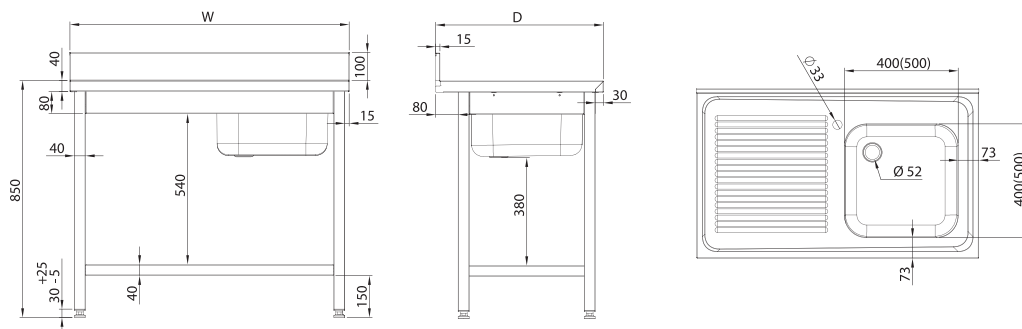
018

WALL TABLE WITH SLIDING DOORS



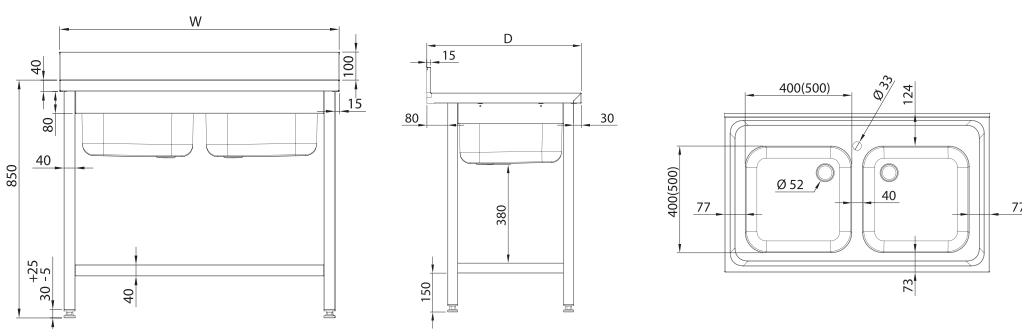
447

TABLE WITH A SINGLE-CHAMBER SINK WITH A SHELF



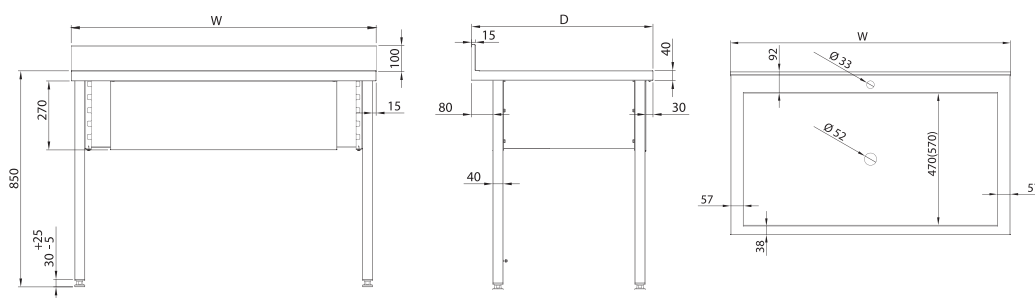
460

TABLE WITH A DOUBLE CHAMBER SINK WITH A SHELF



133

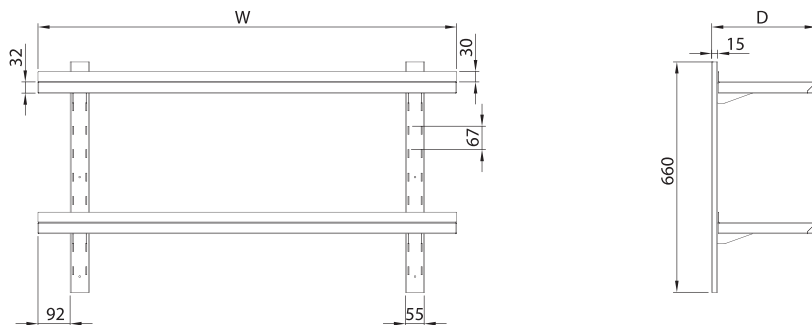
TABLE WITH A SINGLE-CHAMBER BASIN





177

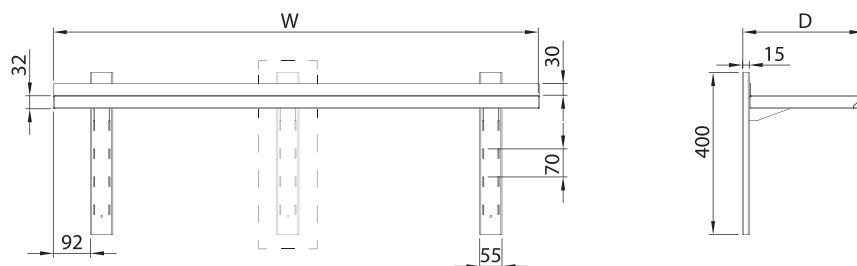
DOUBLE ADJUSTABLE HANGING SHELF



175

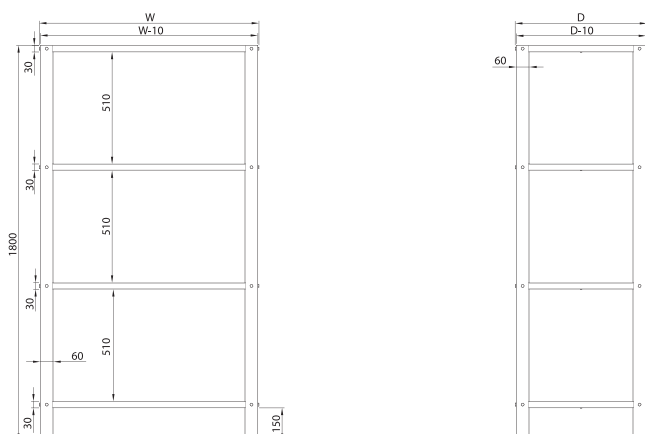
176

SINGLE ADJUSTABLE HANGING SHELF



188

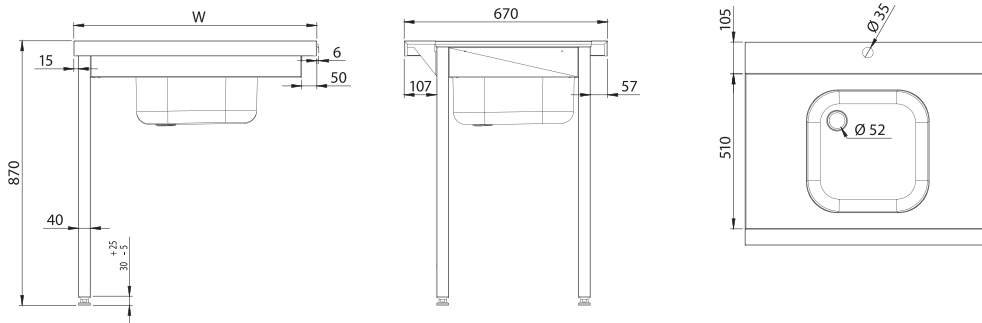
STORAGE RACK SOLID SHELVES



477

479

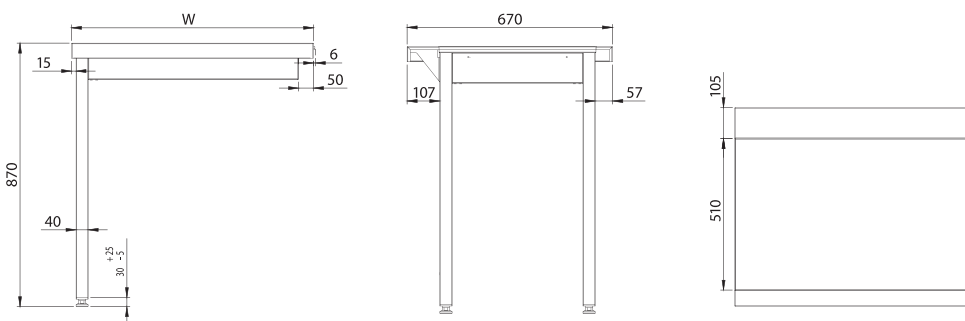
LOADING TABLE FOR STALCAST HOOD DISHWASHER



478

480

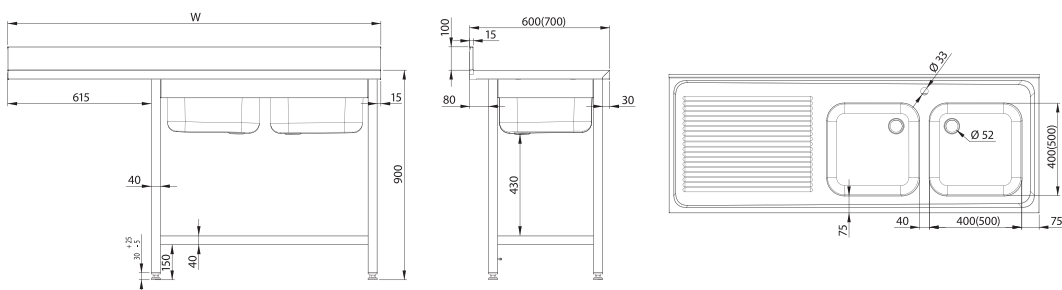
UNLOADING TABLE FOR STALCAST HOOD DISHWASHER



491

492

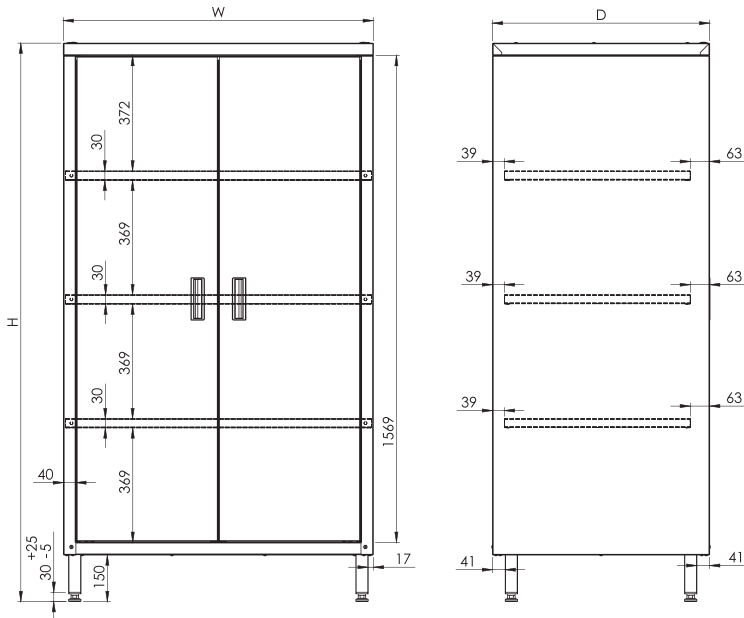
TABLE WITH 2-COMPARTMENT SINK AND ROOM FOR FRIDGE OR DISHWASHER





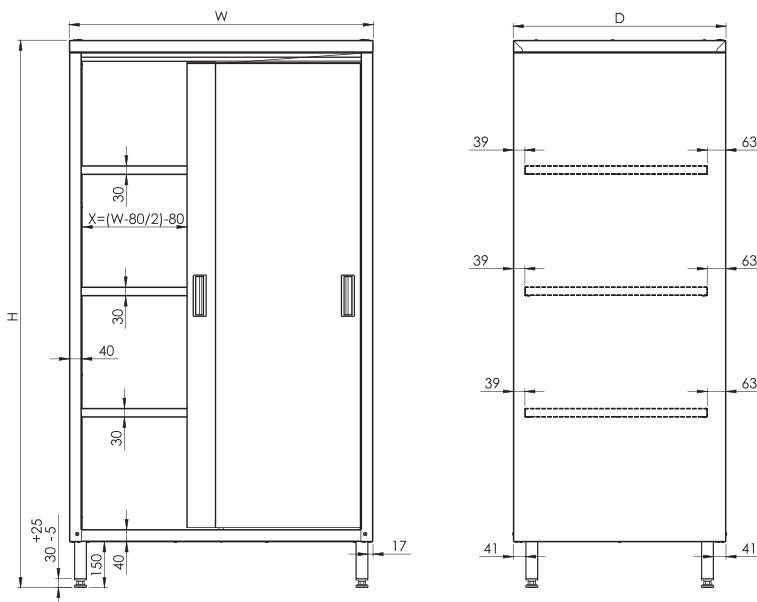
152

STORAGE CABINET, SWINGING DOOR



160

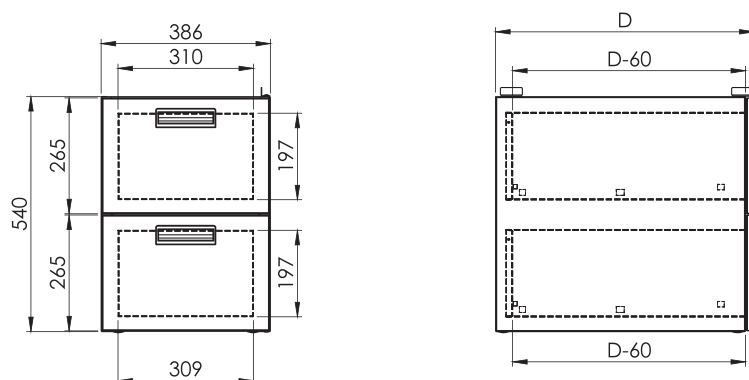
STORAGE CABINET, SLIDING DOOR



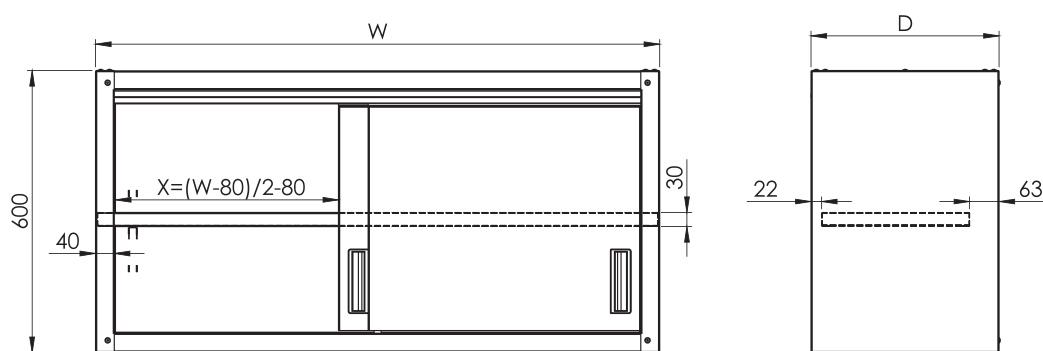
173 CONSOLE HANGING SHELF



232 BLOCK OF TWO OR THREE DRAWERS



172 HANGING CABINET SLIDING DOOR





Contact us



+48 22 509 30 77



Stalgast sp z o. o.
03-736, Plac Konesera 9
Warsaw, Poland



export@stalgastr.com



facebook.com/stalgast



stalgastr.eu